



Knowledge Co-Creation Program (Group & Region Focus)

GENERAL INFORMATION ON

SOCIAL PARTICIPATION AND LIVELIHOOD OF PERSONS WITH DISABILITIES THROUGH A COMMUNITY-BASED INCLUSIVE APPROACH (B)

課題別研修「地域に根ざしたインクルーシブアプローチによる
障害者の社会参加と生計 (B)」

JFY 2018

No. J18-04277 /ID. 1884530

Course Period in Japan: From August 22 to September 29, 2018

This information pertains to one of the JICA Knowledge Co-Creation Program (Group & Region Focus) of the Japan International Cooperation Agency (JICA), which shall be implemented as part of the Official Development Assistance of the Government of Japan based on bilateral agreement between both Governments.

'JICA Knowledge Co-Creation (KCC) Program' as a New Start

In the Development Cooperation Charter which was released from the Japanese Cabinet on February 2015, it is clearly pointed out that *"In its development cooperation, Japan has maintained the spirit of jointly creating things that suit partner countries while respecting ownership, intentions and intrinsic characteristics of the country concerned based on a field-oriented approach through dialogue and collaboration. It has also maintained the approach of building reciprocal relationships with developing countries in which both sides learn from each other and grow and develop together."* We believe that this 'Knowledge Co-Creation Program' will serve as a center of mutual learning process.

I. Concept

Background

The Convention on the Rights of Persons with Disabilities became effective in May 2008. Article 9 on Accessibility states "to enable persons with disabilities to live independently and participate fully in all aspects of life, States Parties shall take appropriate measures to ensure to persons with disabilities access, on an equal basis with others, to the physical environment, to transportation, to information and communications, including information and communications technologies and systems, and to other facilities and services open or provided to the public, both in urban and in rural areas". Article 19 on independent living in the community states that States Parties recognize the equal right of all persons with disabilities to live in the community, with choices equal to others, and shall take effective and appropriate measures to facilitate full enjoyment by persons with disabilities of this right and their full inclusion and participation in the community. Article 27 on Work and Employment also states, "States Parties recognize the right of persons with disabilities to work, on an equal basis with others; this includes the right to the opportunity to gain a living by work freely chosen or accepted in a labor market and work environment that is open, inclusive and accessible to persons with disabilities".

The World Report on Disability, issued by the World Bank and World Health Organization in 2011, identifies "less economic participation" as one of the areas which affects the lives of persons of disabilities. It reported that "A recent study from the Organization for Economic Co-operation and Development (OECD) showed that in 27 countries working-age persons with disabilities experienced significant labor market disadvantage and worse labor market outcomes than working-age persons without disabilities. The Incheon Strategy to "Make the Right Real" for Persons with Disabilities in Asia and the Pacific, for the new Asian and Pacific Decade of Persons with Disabilities, 2013–2022, includes a goal to reduce poverty and enhance work and employment prospects.

With the consideration of the above-mentioned international policy frameworks, JICA intends to promote the participation and livelihood of persons with disabilities in their communities around the World. Based on the Convention as well as the World Report and other frameworks, JICA Okinawa International Center (OIC) has initiated this training program aiming to promote the social participation and livelihood of persons with disabilities by utilizing local resources and networking systems among the national and local governments, NGOs, private enterprises and organizations of persons with disabilities in Japan.

For what?

This program is designed for organizations (Governments, NGOs, and DPOs (Disabled People's Organizations) in charge of promotion of the social participation and

livelihood of persons with disabilities in their community through utilizing local resources and enhancement of network functions.

For whom?

This program is designed for those who are in charge of promotion of the social participation and livelihood of persons with disabilities in Governments, NGOs and DPOs.

How?

To achieve the purpose, this program provides participants with the opportunity to acquire the knowledge and information on promotion of the social participation and livelihood of persons with disabilities through case studies, visiting local communities, and discussion among participating countries and Japan.

II. Description

1. Title (J-No.):

Social Participation and Livelihood of Persons with Disabilities through a Community-Based Inclusive Approach (B) (J1804277)

2. Course Period in JAPAN

August 22 to September 29, 2018

3. Target Regions or Countries

Iraq, Mongolia, Mozambique, Palau, Saint Lucia, Saint Vincent and the Grenadines, South Africa, Swaziland, Tanzania, Thailand, Zimbabwe

4. Eligible / Target Organization

This program is designed for governments (central and local level), NGOs, and Persons with Disabilities' Organizations (DPOs) responsible for promotion of the social participation and livelihood of persons with disabilities. In addition, this program aims to enhance a relationship among the government officials, NGOs and DPOs to facilitate the activities of each organization. Thus, participating countries are expected to nominate participants from each type of related organizations in a community such as a combination of government and NGO/DPOs.

5. Course Capacity (Upper limit of Participants)

11 participants

6. Language to be used in this program

English

7. Course Objective

Organizations (Government, NGOs, and DPOs) in charge of social participation for persons with disabilities will develop plans or strategy and initiate new actions for

promoting the social participation of persons with disabilities through livelihood, independent living and other support programs, based on learning from experiences of Okinawa, Japan and other countries.

8. Overall Goal

Social participation of persons with disabilities will be increased by the effective functioning of livelihood and other inclusive support programs and network system for persons with disabilities in the communities of respective countries.

9. Expected Module Output and Contents

This program consists of the following components. Details on each component are given below:

(1) Preliminary Phase in participant's home country (April to August 2018) <i>Participating organizations make required preparation for the Program in the respective countries.</i>	
Expected Module Output	Activities
1. Job Report 2. Understanding the outline of social welfare service in Japan	1. Formulation and submission of Job Report in accordance with Annex. 2. Self-study by reference of the websites as below a) Ministry of Health , Labor and Welfare http://www.mhlw.go.jp/english/index.html b) The Basic Law for Persons with Disabilities http://www8.cao.go.jp/shougai/english/law/no84.html c) Services and Supports for Persons with Disabilities Act http://www.cas.go.jp/jp/seisaku/hourei/data/sspd_2.pdf

(2) Core Phase in Japan (August 22 to September 29, 2018) <i>Participants dispatched by the organizations attend the Program implemented in Japan.</i>		
Expected Module Output	Subjects/Agendas	Methodology
1 To analyze the roles, functions and network system of government agencies, NGOs and DPOs through the case studies of Okinawa Prefecture and Japan, and clarify the issues addressed by participants' organization.	1. Overview of world trends in the disability field, including CRPD and CBR guidelines 2. Outline of welfare policy and employment support measures in Japan 3. Activities of Disabled Persons' Organization in Okinawa and their roles in the promotion of social participation. 4. Workshop on job reports	Lecture, Observation, Exercise and Discussion

<p>2 To analyze the effective usage of community resources to achieve social participation of persons with disabilities in Japan, and explain the applicable measures in respective countries.</p>	<p>1. Promotional activities of social participation of persons with disabilities by their organizations, NGOs and local enterprises (specific approach towards different types of disability, adaptation in various types of business) 2. Community- based inclusive approach model: a local city model linking a city, NGOs and enterprises</p>	<p>Lecture, Observation, Exercise and Discussion</p>
<p>3 To formulate a draft of action plan for an effective and feasible social participation program, using the knowledge and skills gained throughout the program in Japan</p>	<p>1. Drafting action plans for effective and feasible social participation programs for persons with disabilities and sharing them among the participants</p>	<p>Exercise, Presentation and Discussion</p>

(2) Finalization Phase in a participant's home country
Participating organizations produce final outputs by making use of results brought back by participants. This phase marks the end of the Program.

Expected Module Output	Activities
<p>To report and review the action plan on social participation program drafted in Japan for the participants' organization</p>	<p>1. Report on the training program in Japan to participants' organization for sharing useful information 2. Discussion and review on the action plan drafted in Japan 3. Implementation of the activities re-planned by the organization</p>
<p>Formulation of the progress report</p>	<p>Application and implementation of the action plan back in the participant's country and submission of its progress report in three months after the phase in Japan.</p>

<Structure of the program>

1. Preliminary phase (activities in your home country):

- (1) Preparation of the Job Report
- (2) Self-study on the outline of disability services in Japan by reference of the websites (see page 4 for details).

2. Core Phase (activities in Japan):

Topic outline (subject to minor changes)

※Abbreviation: L: Lecture, O: Observation, P: Practice

-1st week (22 / August -)

- (1) Briefing about the stay at OIC
- (2) General orientation on Japan (ex: Politics, Culture, and Education)
- (3) Program Orientation

-2nd week (27 / August -)

- (1) L: Disability policy trends in the World
- (2) L: Disability policies in Japan and Okinawa Prefecture
- (3) L: Activities of DPOs with various disabilities in Okinawa
- (4) Job report presentation

-3rd week (3 / September -)

- (1) L: History of the disability movement in Japan
- (2) P: Disability Equality Training
- (3) L: Collaboration of local governments and disabilities
- (4) O: Independent living center

-4th week (10 / September -)

- (1) O: Visiting employment support programs by social welfare organizations
- (2) O: Visiting continuous employment programs for persons with disabilities
- (3) O: Activities of community-based comprehensive programs in Nago, a municipality in Okinawa
- (4) L & O: Social welfare service provided by a person with disability
- (5) L & P: Japanese Job Coach System
- (6) Content Review

-5th week (17 / September -)

- (1) L: Accessibility trends in Japan
- (2) O: Accessibility features in public and private facilities in Okinawa
- (3) L: Okinawa Prefecture's Ordinance on the creation of inclusive society: an initiative by persons with disabilities
- (4) Content Review

-6th week (24 / September -)

- (1) Drafting reports
- (2) Presentation and discussion of reports
- (3) Program evaluation, closing ceremony

3. Finalization Phase (activities in home country)

Participants are required to implement the action plan and report on progress within three (3) months after the end of the phase in Japan.

III. Conditions and Procedures for Application

1. Expectations from the Participating Organizations:

- (1) This program is designed primarily for organizations that intend to address specific issues or problems identified in their operation. Participating organizations are expected to use the project for those specific purposes.
- (2) This program is enriched with contents and facilitation schemes specially developed in collaboration with relevant prominent organizations in Japan. These special features enable the project to meet specific requirements of applying organizations and effectively facilitate them toward solutions for the issues and problems.

2. Nominee Qualifications:

Applying Organizations are expected to select nominees who meet the following qualifications.

(1) Essential Qualifications

- 1) Current Duties: be engaged in promoting social participation of persons with disabilities.
- 2) Experience in the relevant field: have more than three years of working experience in promoting social participation including livelihood or independent living of persons with disabilities
- 3) Educational Background: be a graduate of university or equivalent
- 4) Health: must be in good health, both physically and mentally, to participate in the Program in Japan. Pregnant applicants are not recommended to apply due to the potential risk of health and life issues of mother and fetus.

(2) Recommendable Qualifications

Personnel connected with JICA experts/ volunteers are preferable.

※Persons with disabilities are encouraged to apply

3. Required Documents for Application

(1) Application Form: The Application Form is available at respective country's JICA office (or the Embassy of Japan).

(2) Questionnaire & Job Report: to be submitted with Application Form. Formulate the report in accordance with 'ANNEX1, 2' of this General Information.

*** Application Form, Questionnaire and Job Report must be computer-printed, NOT handwritten.**

(3) Photocopy of passport: to be submitted with the application form, if you

possess your passport which you will carry when entering Japan for this program. If not, you are requested to submit its photocopy as soon as you obtain it.

*Photocopy should include the followings:

Name, Date of birth, Nationality, Sex, Passport number and Expire date.

(4) Nominee's English Score Sheet: to be submitted with the application form. If you have any official documentation of English ability. (e.g., TOEFL, TOEIC, IELTS)

4. Procedures for Application and Selection :

(1) Submission of the Application Documents:

Closing date for applications: **Please inquire to the JICA office (or the Embassy of Japan).**

After receiving applications, the JICA office (or the Embassy of Japan) will send them to **the JICA Center in JAPAN** by **July 4, 2018**.

(2) Selection:

After receiving the documents through proper channels from your government, the JICA office (or the embassy of Japan) will conduct screenings, and then forward the documents to the JICA Center in Japan. Selection will be made by the JICA Center in consultation with concerned organizations in Japan. *The applying organization with the best intention to utilize the opportunity of this program will be highly valued in the selection.* Qualifications of applicants who belong to the military or other military-related organizations and/or who are enlisted in the military will be examined by the Government of Japan on a case-by-case basis, consistent with the Development Cooperation Charter of Japan, taking into consideration their duties, positions in the organization, and other relevant information in a comprehensive manner.

(3) Notice of Acceptance

Notification of results will be made by the JICA office (or the Embassy of Japan) **not later than July 23, 2018**.

5. Conditions for Attendance:

(1) to strictly adhere to the program schedule.

(2) not to change the program topics.

(3) not to extend the period of stay in Japan.

(4) not to be accompanied by family members during the program.

(5) to return to home countries at the end of the program in accordance with the travel schedule designated by JICA.

(6) to refrain from engaging in any political activities, or any form of employment for

profit or gain.

- (7)** to observe Japanese laws and ordinances. If there is any violation of said laws and ordinances, participants may be required to return part or all of the training expenditure depending on the severity of said violation.
- (8)** to observe the rules and regulations of the accommodation and not to change the accommodation designated by JICA.

IV. Administrative Arrangements

1. Organizer:

(1) **Name:** JICA Okinawa International Center (JICA Okinawa)

(2) **Contact:** Mr. YASUMOTO Takafumi (oicctp@jica.go.jp)

2. Implementing Partner:

Non-Profit Organization “Empowerment Okinawa”

3. Travel to Japan:

(1) **Air Ticket:** The cost of a round-trip ticket between an international airport designated by JICA and Japan will be borne by JICA.

(2) **Travel Insurance:** Coverage is from time of arrival up to departure in Japan. Thus traveling time outside Japan will not be covered.

4. Accommodation in Japan:

JICA will arrange the following accommodations for the participants in Japan:

JICA Okinawa International Center

Address: 1143-1 Aza-Maeda, Urasoe-Shi, Okinawa 901-2552, Japan

TEL: +81-98-876-6000 FAX: +81-98-876-6014

(Where “81” is the country code for Japan, and “98” is the local area code)

If there is no vacancy at JICA Okinawa, JICA will arrange alternative accommodations for the participants.

Please refer to facility guide of JICA Okinawa at its URL,

<http://www.jica.go.jp/english/about/organization/domestic/index.html>

5. Expenses:

The following expenses will be provided for the participants by JICA:

(1) Allowances for accommodation, meals, living expenses, outfit, and shipping

(2) Expenses for study tours (basically in the form of train tickets.)

(3) Free medical care for participants who become ill after arriving in Japan (costs related to pre-existing illness, pregnancy, or dental treatment are not included)

(4) Expenses for program implementation, including materials

For more details, please see “III. ALLOWANCES” of the brochure for participants titled “KENSU-IN GUIDE BOOK,” which will be given before departure for Japan.

6. Pre-departure Orientation:

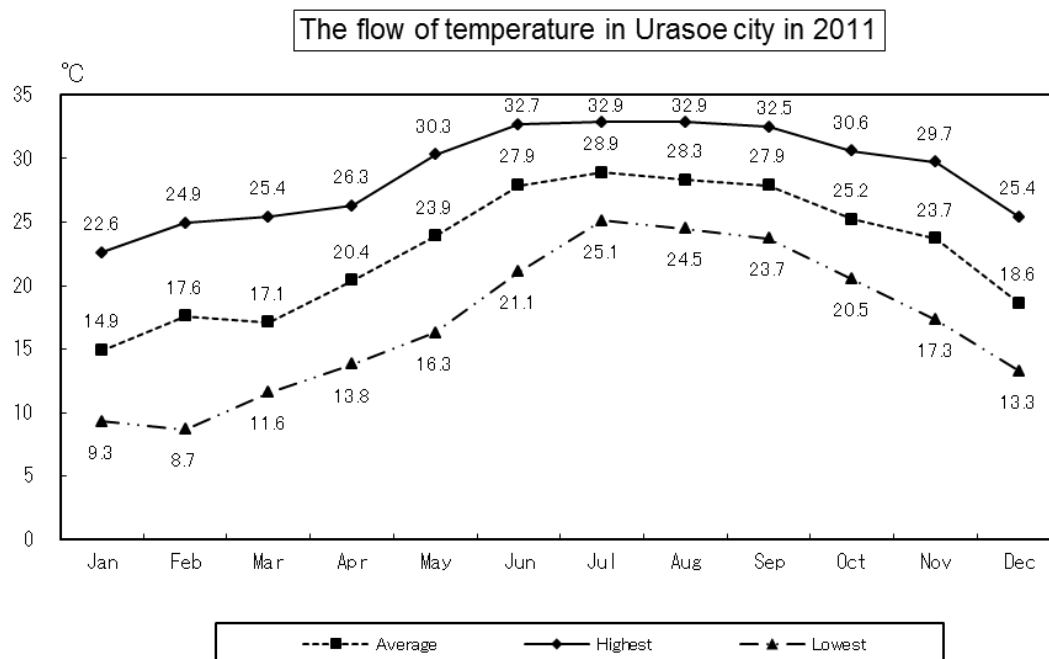
A pre-departure orientation will be held at the respective country’s JICA office (or Japanese Embassy), to provide participants with details on travel to Japan, conditions of the workshop, and other matters.

V. Other Information

1. Climate of Okinawa

Okinawa is located at sub-tropical zone (southern edge of Japan) but climate varies depending upon seasons. While it is hot and heavily humid in the summer season (June to October), it becomes a bit chilly in the winter season (December to March) due to strong northerly wind. Participants are recommended to bring suitable clothing (details are mentioned in below4.)

The following graph is the flow of temperature in Urasoe city where JICA Okinawa International Center (JICA Okinawa, or OIC) is located (Data source: homepage of Urasoe City).



2. Main facilities in JICA Okinawa

OIC is equipped with a variety of facilities for training and welfare activities such as seminar rooms, library, accommodation rooms (details are mentioned in below 3.), dining hall, clinic for medical consultation, gym, tennis court, a swimming pool (available from May to October), Japanese-style room for tea ceremony and recreation rooms.

At OIC dining hall, "HALAL" meals for the Muslim and vegetarian meals are available.

Internet connection available (either by cable or WiFi) at accommodation rooms and other buildings.

3. Accommodation in JICA Okinawa

JICA Okinawa accommodation building has 96 single rooms. Every room is

furnished with bed, desk, chair, bookshelf and closet. Also, there are TV (with satellite channel), DVD player, safety box, telephone, LAN cable jack, etc. in each room.

JICA Okinawa accommodation building has tea lounge, smoking room and laundry room on each floor. Also there is an exercise room, open from 6 am to 10pm.

Iron, musical instruments, sports gears, variety of DVD selections, personal computers are available for rent. Towels and toiletries are provided upon check-in.

Please note that cooking at JICA Okinawa accommodation is strictly prohibited.

4. What to bring

(1) Clothing

It is recommended to bring appropriate clothing according to the season during Participants stay in Okinawa(*refer 1. Climate of Okinawa). If your training program includes plant visit or outdoor activities, suitable uniform/clothing will be provided by JICA or at visiting site upon arrival. Also, JICA Okinawa accommodation front desk has jackets and coats for rental in case of study tour to mainland Japan during winter time.

(2) National Costume

There are a few occasions like opening and closing ceremonies when training participants are kindly requested to wear formal clothing. Nevertheless, casual clothing is acceptable even during training hours of most of the training program.

It is strongly recommended to bring your national or traditional costumes for opening & closing ceremony and for other activities that participants may have opportunities to join.

(3) Photos and Movies

During your stay in Okinawa, JICA Okinawa and/or the local media (TV, newspapers, etc.) may interview you. Please bring photos and videos of your country, your daily life, your office, etc. Please note that photos and videos must be copyright cleared or taken by yourself.

5. Environmental conservation activities in JICA Okinawa

JICA Okinawa emphasizes on the environmental conservation activities such as energy saving, rubbish separation and recycling etc. Participants are kindly requested to cooperate to these activities during their stay at JICA Okinawa. Details will be given on arrival to JICA Okinawa.

6. For your Information

Information of Okinawa is available at following URLs.

(1) Homepage of Urasoe city (where JICA OIC is located)

Urasoe city:

<http://honyaku.j-server.com/LUCURASOEC/ns/tl.cgi/http%3a//www.city.urasoe.lq.jp/?SLANG=ja&TLANG=en&XMODE=0&XCHARSET=utf-8&XJSID=0>

Basic information of Urasoe city is covered in English.

- (2) HP of Okinawa Prefecture: <http://www.pref.okinawa.jp/english/index.html>
Basic information of Okinawa prefecture is covered (Urasoe city is one of the municipalities of Okinawa prefecture) in English.
- (3) HP of Okinawa Convention & Visitors Bureau: <http://en.okinawastory.jp/>
- (4) HP of JICA Head Quarter Domestic Office :
<http://www.jica.go.jp/english/about/organization/domestic/index.html>
- (5) The YouTube channel of JICA Okinawa :
<https://www.youtube.com/user/jicaokinawa>

More information is available at the reception of JICA OIC.

VI. ANNEX:

Annex 1

QUESTIONNAIRE FOR Social Participation and Livelihood of Persons with Disabilities through a Community-Based Inclusive Approach

Please fill out this questionnaire and submit with your Application Form. The Application Form without the filled questionnaire will be disqualified.

***Remarks: The Application Form, Questionnaire and Job Report must be computer-printed, not handwritten.**

BASIC DATA

1. Name: Mr. /Ms. _____
first name / middle name / last name

2. Nationality:

3. E-mail address:

4. TEL: FAX: MOBILE:

5. Date of Birth: Age:

DISABILITY DATA

1. Do you have any disability? () NO () YES

If YES please continue to answer the following questions.

(a) Please describe your disabilities in details.

(If you are paraplegic or quadriplegic please identify the level of injury, e.g. C5 or T10)

(b) If you use any assistive device(s), please describe.

(c) If you need any assistance during the trip to Japan, and/or during the training course please describe below in details. (e.g., For transportation, accommodation, lecture, etc.)

(d) For the participant using own wheelchair, please fill up the below:

- Type**
- Manual, collapsible
 - Manual, non- collapsible
 - Motorized with wet cell battery/
 - Motorized with wet cell battery /Sealed Type
 - Motorized with dry battery

- Size**
- Length (cm)
 - Width (cm)
 - Height (cm)
 - Weight (kg)

If you request other special arrangement, please specify.

(e) For the participants with a visual impairment or hearing impairment, please answer the following.

I need to use (please mark and fill space):

- Enlarged print ---Font () and Size (points)
- Electronic Data-JAWS Screen Reading software (English)
- Electronic Data-Other software (English)
(Please specify _____)
- Sign Language interpreter
- Hearing aids
- Others (please specify _____)

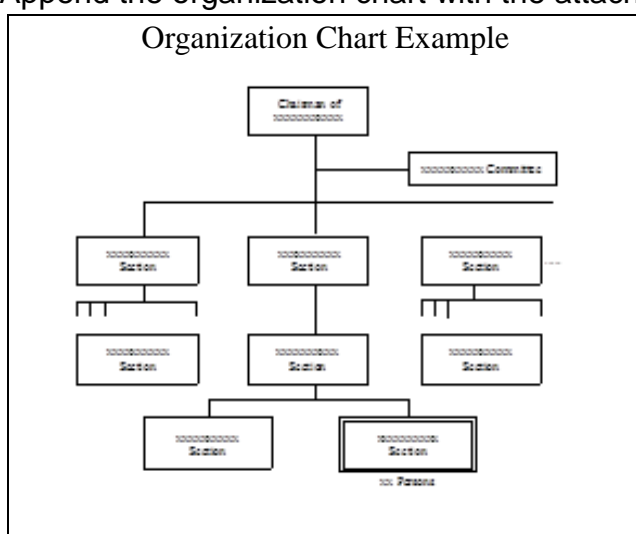
1. Job Report

Name:	Country:
country:	Population:

【Organization and Job Description】

1. Basic information of your organization.

*Append the organization chart with the attached paper.



Name of organization: _____

Type of your organization: () National Governmental
() Local Governmental
() Non-Governmental
() Private

Financial status of your organization:

() independent
() funded by _____
() subsidized by _____
() others (Clarify below.)

Number of employees: _____

Among them, the number of PWDs (Person with Disabilities) _____

Date of establishment: _____

2. Roles and functions of your organization

(1) Organization

(2) Your department/section

3. Activity in which you are engaged in your organization.

(1) Title of your position:

(2) Your responsibilities and daily job activities

(3) Current Issues/Constraints

(4) If you have any topics which you would like to discuss during the course, please describe them.

(5) Briefly describe the situation of social participation of persons with disabilities in your country, including accessibility, education, employment, independent living, the roles played by disabled persons' organizations (DPOs) and others

(6) Please answer the following questions.

A) Have your country ratified the Convention on the Rights of Persons with Disabilities? If yes, which year did she ratify?

B) Does your country have a legal quota for employment of PWDs? If yes what is the percentage?

C) Have you heard about Disability Equality Training (DET)? Is DET introduced in your country?

2. Self-study on social welfare services in Japan

In order to understand the outline of social welfare service in Japan, you are requested to self-study the websites below:

- a) Ministry of Health , Labor and Welfare
<http://www.mhlw.go.jp/english/index.html>
- b) The Basic Law for Persons with Disabilities
<http://www8.cao.go.jp/shougai/english/law/no84.html>
- c) Services and Supports for Persons with Disabilities Act
http://www.cas.go.jp/jp/seisaku/hourei/data/sspd_2.pdf
- d) Other information on the laws for persons with disabilities in Japan
http://www.unescapsdd.org/files/documents/DPC_Japan.doc

For Your Reference

JICA and Capacity Development

The key concept underpinning JICA operations since its establishment in 1974 has been the conviction that “capacity development” is central to the socioeconomic development of any country, regardless of the specific operational scheme one may be undertaking, i.e. expert assignments, development projects, development study projects, training programs, JOCV programs, etc.

Within this wide range of programs, Training Programs have long occupied an important place in JICA operations. Conducted in Japan, they provide partner countries with opportunities to acquire practical knowledge accumulated in Japanese society. Participants dispatched by partner countries might find useful knowledge and re-create their own knowledge for enhancement of their own capacity or that of the organization and society to which they belong.

About 460 pre-organized programs cover a wide range of professional fields, ranging from education, health, infrastructure, energy, trade and finance, to agriculture, rural development, gender mainstreaming, and environmental protection. A variety of programs and are being customized to address the specific needs of different target organizations, such as policy-making organizations, service provision organizations, as well as research and academic institutions. Some programs are organized to target a certain group of countries with similar developmental challenges.

Japanese Development Experience

Japan was the first non-Western country to successfully modernize its society and industrialize its economy. At the core of this process, which started more than 140 years ago, was the “*adopt and adapt*” concept by which a wide range of appropriate skills and knowledge have been imported from developed countries; these skills and knowledge have been adapted and/or improved using local skills, knowledge and initiatives. They finally became internalized in Japanese society to suit its local needs and conditions.

From engineering technology to production management methods, most of the know-how that has enabled Japan to become what it is today has emanated from this “*adoption and adaptation*” process, which, of course, has been accompanied by countless failures and errors behind the success stories. We presume that such experiences, both successful and unsuccessful, will be useful to our partners who are trying to address the challenges currently faced by developing countries.

However, it is rather challenging to share with our partners this whole body of Japan’s developmental experience. This difficulty has to do, in part, with the challenge of explaining a body of “tacit knowledge,” a type of knowledge that cannot fully be expressed in words or numbers. Adding to this difficulty are the social and cultural systems of Japan that vastly differ from those of other Western industrialized countries, and hence still remain unfamiliar to many partner countries. Simply stated, coming to Japan might be one way of overcoming such a cultural gap.

JICA, therefore, would like to invite as many leaders of partner countries as possible to come and visit us, to mingle with the Japanese people, and witness the advantages as well as the disadvantages of Japanese systems, so that integration of their findings might help them reach their developmental objectives.



CORRESPONDENCE

For enquiries and further information, please contact the JICA office or the Embassy of Japan.

Further, address correspondence to:

JICA Okinawa International Center (JICA OKINAWA)

Address: 1143-1 Aza-Maeda, Urasoe-Shi, Okinawa, 901-2552, Japan

TEL: +81-98-876-6000 FAX: +81-98-876-6014